

Hardware Specifications



- Power Input: 9 -48 VDC
- Power Consumption: <250mA@12VDC
- Dimensions 78 x 108 x 24 mm
- Operating Temperature: -20 – 80 °C
- Regulation: CE Class A, FCC Class A
- DIN Rail mounting
- 4x 485 / 232 port
- 1x Ethernet port
- 4GB Internal Storage

Software Specifications

Plug and Play. No extra software required to start working.

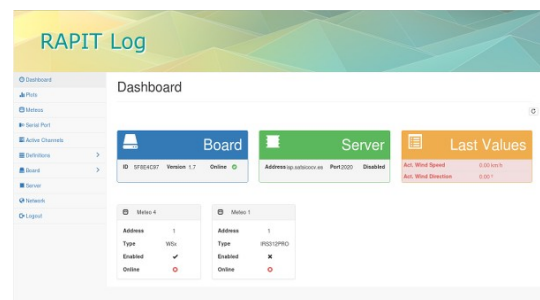
Friendly and easy to set up interface

Mobile Ready

Able to store up to more than 5 years of data with average configuration

It can send data to a remote server for further processing and reporting

Fully compatible with the following elements:



- WSx
- ARS31 / ARS31Pro
- Analog probes 4-20mA
- IRS31Pro
- Anacon
- PT100 probes